
LAND O' LAKES HIGH SCHOOL

**10TH GRADE
COURSE SELECTION**

CLASS OF 2028

MEET YOUR LOLHS TEAM



MS. JOUSTRA
SCHOOL COUNSELOR
cmoody@pasco.k12.fl.us



MR. MELLIN
PRINCIPAL



MR. PHILLIPS
GRADUATION COACH
dkphilli@pasco.k12.fl.us



MS. BEERMAN
ASSISTANT PRINCIPAL
tbeerman@pasco.k12.fl.us



MS. COLON
COLLEGE/CAREER SPECIALIST
sfraneco@pasco.k12.fl.us

GRADUATION REQUIREMENTS

24 CREDITS, INCLUDING:

- 4 Credits of English
- 4 Credits of Math
 - 1 must be Algebra 1
 - 1 must be Geometry
- 3 Credits of Science
 - 1 must be Biology
- 3.5 Credits of Social Studies
 - Personal Finance
 - World History
 - US History
 - US Government/Economics
- 1 Credit of a Fine Art
- 1 Credit of Physical Education
- 7.5 Credits of Electives

PASS THE ALGEBRA 1 BEST

Or earn a concordant score on the PSAT, SAT, ACT, CLT, or Geo EOC

PASS THE GRADE 10 ELA FAST

Or earn a concordant score on the SAT, ACT, CLT

2.0000 UNWEIGHTED GPA

GRADUATION REQUIREMENTS

- ✓ At this point, 9th graders should have at least 3 credits and a 2.0000 unweighted GPA to be considered on track for graduation.
- ✓ At the end of 9th grade, students should have at least 6 credits and a 2.0000 unweighted GPA to be considered on track for graduation.

WHAT CLASS IS RIGHT FOR ME?

REGULAR

- Focus on making students “life ready”
- Prepares students to pass state & district mandated tests

HONORS

- Prepares students for entry-level college coursework
- Academically challenging; faster paced, deeper dive into the content
- Student has strong work ethic, participates in class discussions, and advocates when struggling

AP/DE

- Prepares students for university-level coursework
- Offers intense writing & critical thinking exercises
- Nightly homework, reading & writing
- Potential to earn college credit

Still not sure? Talk to your current teachers!

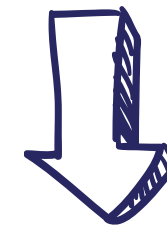
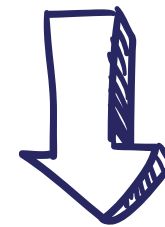
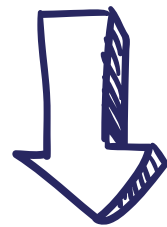
ENGLISH

9th Grade

ENGLISH 1

ENG 1/ENG 1 HON
(A/B + FAST 3/4/5)

ENG 1 HON
(A/B + FAST 4/5)

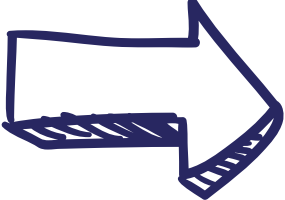


10th Grade

ENGLISH 2

ENGLISH 2
HONORS

AICE ENGLISH
GENERAL PAPER
(Students who take this
course in 10th grade plan to
continue with college-level
courses for English.)

WRITE ON COURSE CARD  **ENTER IN MYSTUDENT**

ENGLISH	
(1.0) English 2	→ ENG 2 1001340Z
(1.0) English 2 Honors	→ ENG HON 2 1001350Z
(1.0) AICE English	→ AICE ENG GEN PAPER 1009400Z

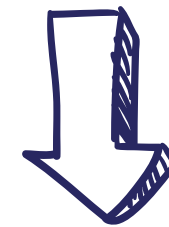
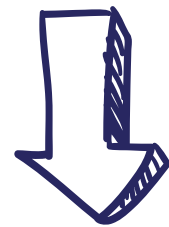
**** MUST SELECT A BACKUP OPTION FOR DE COURSES**

MATH

9th Grade

ALG 1/ALG 1 HON
(C/D/F + EOC 1/2)

ALG 1/ALG 1 HON
(A/B + EOC 3/4/5)



10th Grade

GEOMETRY

GEOMETRY HON

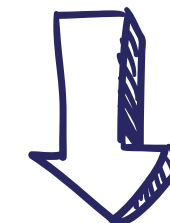
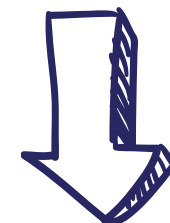
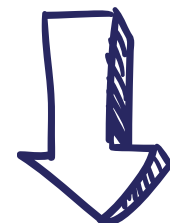
MATH

9th Grade

GEO/GEO HON
(C/D/F + EOC 1/2)

GEO/GEO HON
(A/B/C + EOC 3/4/5)

ALGEBRA 2
HONORS



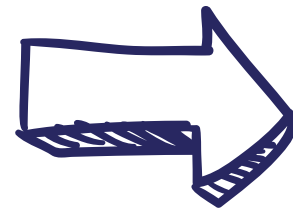
10th Grade

MATH FOR COLLEGE
ALGEBRA
OR
MATH FOR COLLEGE
LIBERAL ARTS

ALGEBRA 2
OR
ALGEBRA 2 HON

AP PRE-CALC

WRITE ON COURSE CARD



ENTER IN MYSTUDENT

MATHEMATICS

(1.0) Algebra 1	→	ALG 1 (1200310Z)
(1.0) Geometry	→	GEO (1206310Z)
(1.0) Geometry Honors	→	GEO HON (1206320Z)
(1.0) Math for College Algebra	→	MATH COLL ALGEBRA (1200710Z)
(1.0) Math for College Liberal Arts	→	MATH COLL LIB ARTS (1207350Z)
(1.0) Algebra 2	→	ALG 2 (1200330Z)
(1.0) Algebra 2 Honors	→	ALG 2 HON (1200340Z)
(1.0) AP Pre-Calculus	→	AP PRECALCULUS (1202305Z)

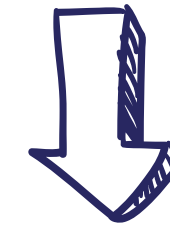
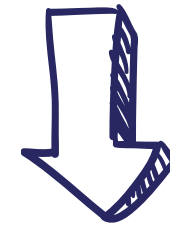
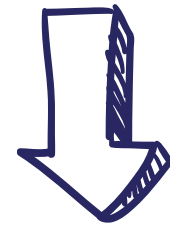
SCIENCE

9th Grade

EARTH SPACE
SCIENCE

BIO 1
(C/D/F + EOC 1/2)

BIO 1/BIO 1 HON
(A/B + EOC 3/4/5)



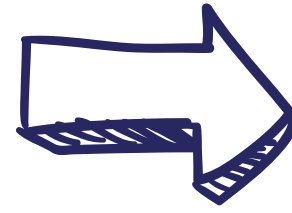
10th Grade

BIOLOGY 1

ERTH SPACE SCI
OR
MARINE SCI

MARINE SCI HON,
CHEMISTRY, OR
PHYSICS

WRITE ON COURSE CARD



ENTER IN MYSTUDENT

SCIENCE

(1.0) Biology 1	→	BIO 1 (2000310Z)
(1.0) Biology 1 Honors	→	BIO 1 HON (2000320Z)
(1.0) Earth Space Science	→	ERTH/SPA SCI (2001310Z)
(1.0) Marine Science	→	MARINE SCI 1 (2002500Z)
(1.0) Marine Science Honors	→	MARINE SCI 1 HON (2002510Z)
(1.0) Chemistry Honors	→	CHEM 1 HON (2003350Z)
(1.0) Physics Honors	→	PHYS 1 HON (2003390Z)
(0.5 each) DE Intro Bio/Human Bio (BSC 1005/BSC 1020)**	→	BSC1005 & BSC1020D <small>(Must also write "Backup" by a different science class on course card.)</small>

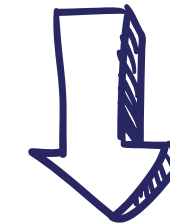
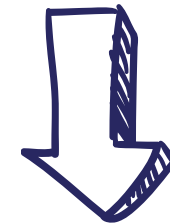
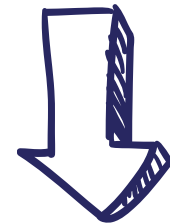
SOCIAL STUDIES

9th Grade

PERSONAL
FINANCE

PERSONAL
FINANCE HON

WORLD HIST HON



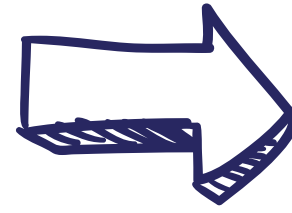
10th Grade

WORLD HISTORY

WORLD HIST HON
OR
AP WORLD HIST

US HIST HON,
AP US HIST, OR
DE AMER HIST

WRITE ON COURSE CARD



ENTER IN MYSTUDENT

SOCIAL STUDIES

- | | | |
|---|---|--|
| (0.5) Personal Finance | → | PER FIN & MON MGMT (2102371Z) |
| (0.5) Personal Finance Honors | → | PER FIN & MON MGMT H (2102373Z) |
| (1.0) World History | → | WORLD HIST (2109310Z) |
| (1.0) World History Honors | → | WORLD HIST HON (2109320Z) |
| (1.0) AP World History | → | AP WORLD HIST:MOD (2109420Z) |
| (1.0) US History Honors | → | US HIST HON (2100320Z) |
| (1.0) AP US History | → | AP US HIST (2100330Z) |
| (1.0) DE American History
(AMH 2010/AMH 2020)** | → | AMH2010D & AMH2020D
(Must also write "Backup" by a different US History class on course card.) |

PHYSICAL EDUCATION

Meeting the PE Requirement:

- 1 Credit of HOPE
- 0.5 Credit of Personal Fitness (Online) + 0.5 Credit of PE class such as Team Sports
- 0.5 Credit of Personal Fitness (Online) + 0.5 Credit of Outdoor Education (Online) or Fitness Lifestyle Design (Online)
- 0.5 Credit of Personal Fitness (Online) + Marching Band Waiver***
- Waiver from 2 seasons of a JV or Varsity sport at LOLHS***

***IMPORTANT: You do not earn credit for waivers, so you would need to complete extra elective credits. Waivers are not automatically entered. Follow up with counselor if you want a waiver entered.

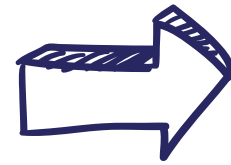
FINE/PRACTICAL ART

- Recommend that students take a Fine or Practical Art course if they didn't take one during 9th grade
- Any course on the course card that has a ~ symbol meets the Fine Art requirement.
- NOTE: Some courses require after school commitment (e.g., practice, recitals, performances).
- Prior experience is not required for Band, Dance, or Chorus.

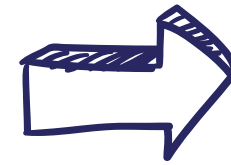


CULINARY ACADEMY

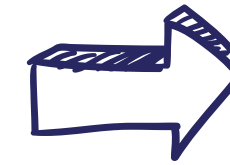
9th Grade
NUTRITION &
FOOD SCI



10th Grade
CULINARY 1



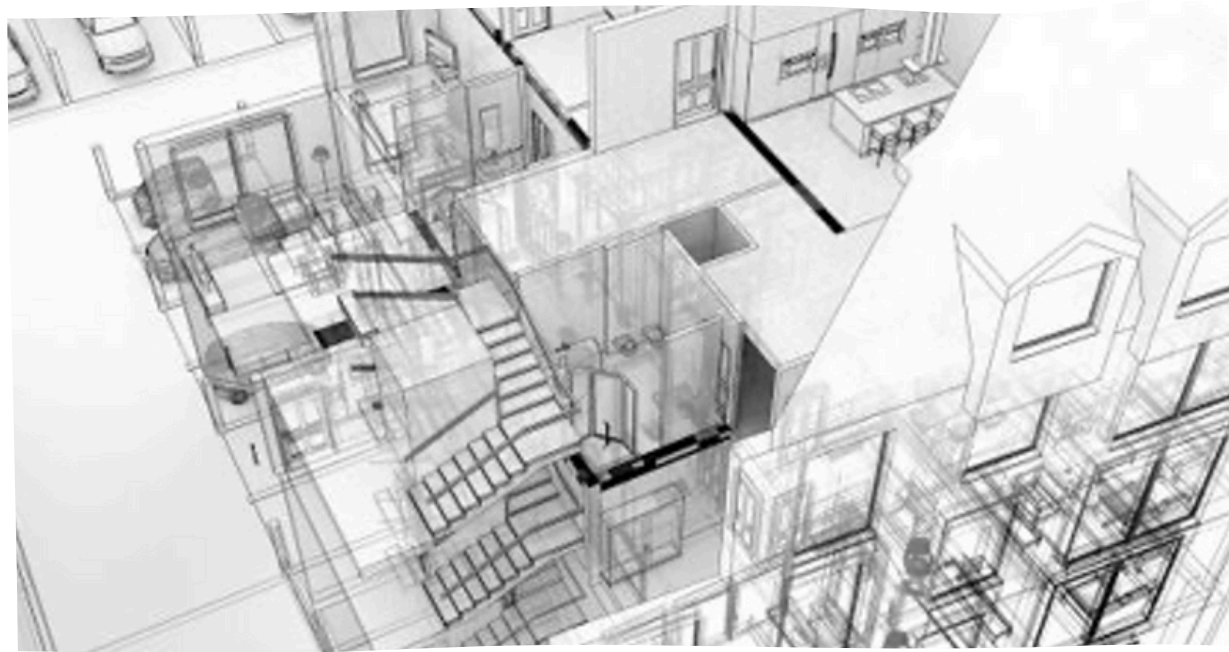
11th Grade
CULINARY 2
(MEETS THE FINE ART
REQUIREMENT)



12th Grade
CULINARY 3 &
CULINARY 4

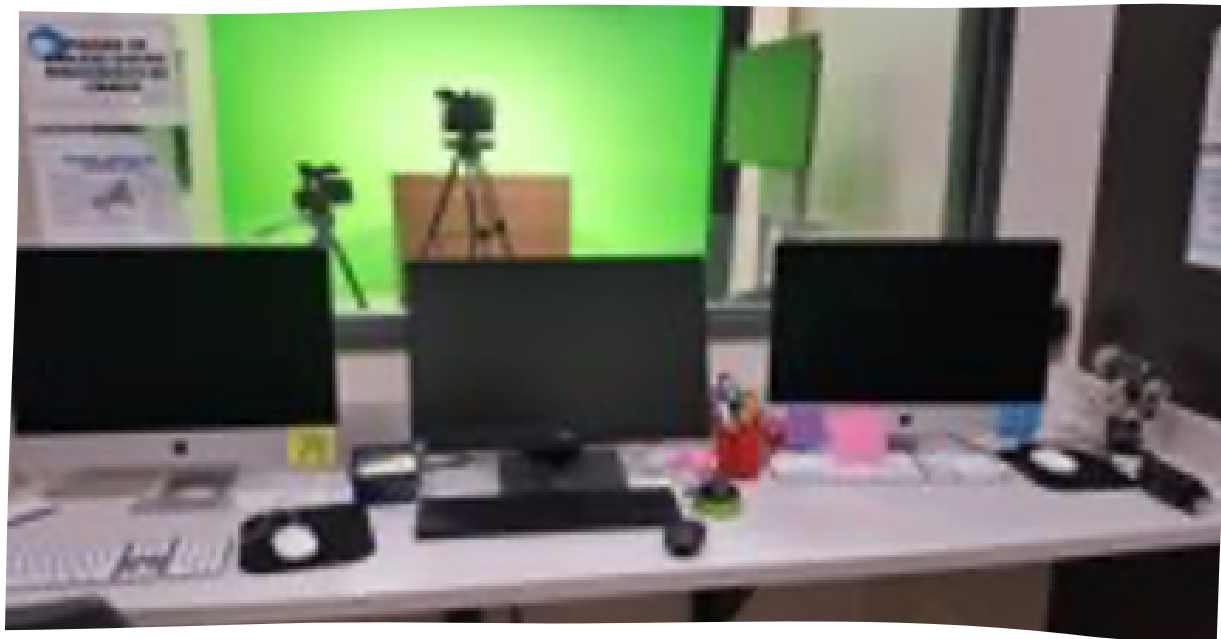
Students must be in the Culinary Academy
to take the Culinary classes.





ELECTIVES

- Two consecutive years of a foreign language (i.e., Spanish 1 and Spanish 2) are NOT required for high school graduation, but ARE required for the Bright Futures scholarship and admission to most 4-year universities.
- Some multi-year CTE pathways provide opportunities for students to get industry certifications:



- Digital Info Tech - Microsoft Applications
- Digital Design - Adobe Photoshop, Illustrator
- Tech Design - AutoCAD
- Early Childhood - Early Childhood Prof. Certificate
- Business Entrep Prin -

ACADEMIC ELECTIVES

(0.5) African-American Hist Hon	AFR-AMER HIST HON (2100336Z)
(0.5) Contemporary History	CONTEMP HIST (2109350Z)
(0.5 each) Creative Writing 1 & 2	CREATIVE WRIT 1 & CREATIVE WRIT 2
(0.5) Holocaust History Honors	HOLOCAUST HIST HON (2100405Z)
(1.0) Foundations of Journalism ~	FDN OF JOURNALISM ((8203000Z))
(1.0) Journalism 2, TV Production	JOURN 2 (1006310Z)
(1.0) Journalism 2, Yearbook	JOURN 2 (1006310Z)
(0.5) Law Studies	LAW STUDIES (2106350Z)
(0.5) Court Procedures	COURT PROCED (2106390Z)
(0.5 each) Psych 1 & 2	PSYCH 1 & PSYCH 2
(0.5) Sociology	SOCIOLOGY (2108300Z)
(1.0) AP Human Geography	AP HUMAN GEOG (2103400Z)
(1.0) AP Psychology	AP PSYCH (2107350Z)

ELECTIVES

ACADEMY/CTE PROGRAMS

(1.0) Accounting Applications (Hon) ~	ACCOUNTING APPS 1 (8203310Z)
(1.0) Business Entrep Prin (Hon) ~	BUSINESS ENTREP PRIN (8215120Z)
(1.0) Culinary Arts 1 ~ <i>(Must be in Culinary Academy)</i>	CULINARY ARTS 1 (8800510Z)
(1.0) Digital Design (Hon) 1, 2 ~	DIGITAL DESIGN 1 (8209510Z)
(1.0) Digital Info Technology ~	DIGITAL INFO TECH (8207310Z)
(1.0) Early Childhood 1, 2 ~	EARLY CHILDHOOD ED 1 (8405110Z)
(1.0) Marketing Essentials ~	MARKETING ESSENTIALS (8827110Z)
(1.0) Technical Design (Hon) 1, 2 ~	TECHNICAL DESIGN 1 (8401010Z)
(1.0) AP Computer Sci Prin ^M <i>(Must have passed Alg 1 EOC)</i>	AP COMPUTER SCI PRIN (0200335Z)
(1.0) AP Computer Sci A ^M	AP COMPUTER SCI A (0200320Z)

IF YOU SELECT A SEMESTER COURSE, YOU NEED ANOTHER SEMESTER COURSE TO GO ALONG WITH IT!

PHYSICAL EDUCATION

(1.0) HOPE

(0.5) Individual/Dual Sports 1, 2

(0.5) Team Sports 1, 2

(0.5) Weight Training 1, 2, 3, 4

HOPE (3026010Z)

INDIV/DUAL SPRTS

TEAM SPRTS

WEIGHT TRAIN

WORLD LANGUAGES

(1.0) American Sign Lang 1, 2, 3H, 4H

(1.0) French 1, 2, 3H

(1.0) Spanish 1, 2, 3H, AP

AMER SIGN LANG 1 (0717300Z)

FRENCH 1 (0701320Z)

SPANISH 1 (0708340Z)

FINE ARTS

(1.0) Band 3, 4 ~ ^

(1.0) Percussion 1, 2 ~ ^

(1.0) Jazz Band 1, 2 ~ ^

(Must co-enroll in Band or Percuss.)

(1.0) Eurhythmics 1 ~ ^

(1.0) Chorus 3, 4 ~ ^

(1.0) Acting 1, 2 ~

(1.0) Dance Techniques 1, 2, 3H ~ ^

(1.0) Dance Choreography 1 ~ ^

(1.0) 2-D Art 1, 2 ~

(1.0) 3-D Art 1 ~

(1.0) Ceramics 1, 2 ~

BAND 4 (1302330Z)

INSTRU ENS 2 (1302470Z)

JAZZ ENS 2 (1302510Z)

EURHY 1 (1305310Z)

CHORUS 4 (1303330Z)

ACTING 2 (0400380Z)

DANCE TECHNQS 2 (0300320Z)

DANCE CHOR PERF (0300380Z)

2-D STUDIO ART 1 (0101300Z)

3-D STUDIO ART 1 (0101330Z)

CERAM/POT 1 (0102300Z)

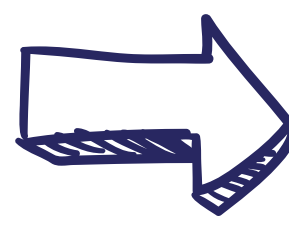
ELECTIVES

IF YOU SELECT A SEMESTER COURSE, YOU NEED ANOTHER SEMESTER COURSE TO GO ALONG WITH IT!

ON/OFF CAMPUS PLACEHOLDERS

- PHSC Placeholder = student plans to take a DE class online or through PHSC.
- eSchool Placeholder = student plans to take an online class.
 - Students can have up to 3 eSchool placeholders on their schedule.
 - It is the student's responsibility to sign up for/complete the class online. Students must complete the online course to earn credit for any placeholders on their schedule.

WRITE ON COURSE CARD



ENTER IN MYSTUDENT

ON/OFF CAMPUS PLACEHOLDERS

(Must take class online or through PHSC to earn credit)

eSchool ON Campus

ESCHOOL ON CAMPUS (ZZESCMPZ)

eSchool OFF Campus *(indicate period)*

ESCHOOL OFF CAMPUS (ZZESOFF*)

PHSC OFF Campus** *(indicate period)*

PHSC OFF CAMPUS (ZZPHOFF*)

*For the off campus placeholders, the number at the end indicates which period you want to have off campus. (For example, ZZESOFF₁ means that I want to have eSchool Off Campus 1st period.)

eSchool Placeholder - Student **MUST** take a class online through Pasco eSchool.

PHSC Off Campus - Student **MUST** take a Dual Enrollment class through PHSC or Pasco eSchool.

DE

vs.

AP

College credit is earned if student passes the class.

Grade earned goes on high school AND college transcript.

College course. Parents do not have access to grades until after they are finalized.

Student **MUST** meet eligibility requirements (GPA & Test Scores)

College credit is earned if student passes the AP exam.

Grade earned goes on high school transcript **ONLY**.

High school course. Grades are posted the same as other HS courses.

Course does not have specific eligibility requirements.

DUAL ENROLLMENT

DUAL ENROLLMENT INFO SESSION

Counselors will walk through the step-by-step process that is required for taking DE courses.

Sign up is NOT required to attend.

DATE - THURS, 3/27

TIME - 5:30-6:30 P.M.

LOCATION - LOLHS COMMONS

DUAL ENROLLMENT

PERT TESTING

In order to be eligible for DE, students must have a 3.0000 unweighted GPA and meet minimum test score requirements on either the PERT, SAT, ACT, or CLT. We will be offering the PERT for free at LOLHS after school for interested students.

SIGN UP IS REQUIRED. Use the QR Code below to sign up by Friday, February 21st.

DATE - TUES, 3/4(READING & WRITING)
WED, 3/6(MATH)

TIME - 1:45 P.M.

LOCATION - MEDIA CENTER



REMINDERS



Students must have 6 classes each semester, regardless of the number of high school credits previously earned. (If you select a semester course, you must select another semester course to go with it.)



Students **CANNOT** earn duplicate credit. (You can't take a course that you've already taken.)



Talk to your current teachers about course options for you.

COURSE CARD FINAL CHECK



1 English Class



1 Math Class



1 Science Class



1 Social Studies Class



Elective Option 1 (X) - Fine Art or
HOPE, if yet to complete



Elective Option 2 (X)



Elective Option 3, 4, & 5

NOTE: All course request changes must be done before March 1st.
Email cmoody@pasco.k12.fl.us to request change.



Land O' Lakes High School
10th Grade Course Selection 2025-2026



Name: Cameron Moody Student ID: 123456

Email Address: c.moody@pasco.k12.fl.us

- Students must be enrolled in 6 classes each semester, regardless of the number of high school credits previously earned.
- We will do our best to honor students' first choices of electives. The remaining elective choices will be considered as alternates if the top elective choice does not fit in the schedule or is not available. If a student selects a course as an option on this sheet and is assigned to that class, we will not accommodate a schedule change request in the fall to remove them from it. The requested courses are dependent on grade level, availability, class size, and student qualifications (prerequisites).
- Students cannot pick their teachers, class periods, or lunch period. **Please choose courses carefully since it likely will not be possible to change the courses later.**
- If a student wants to take an online class, they can choose to take it in our on-campus eSchool lab or off-campus. If a student chooses to go off campus, the off-campus placeholder must be at the beginning or the end of the day **AND** the student must have **daily transportation**. Students cannot stay on campus at all during an off-campus placeholder. Depending on availability, students may not be able to have more than one period in the on-campus eSchool lab. **Students can have a maximum of 3 eSchool placeholders.**
- Students who are interested in doing a Dual Enrollment (DE) course MUST meet the eligibility requirements **before May 2025** to be able to take DE courses in the fall. Students taking a DE course online or through PHSC will have a "PHSC Off Campus Placeholder" on their schedule, and **must have daily transportation**. Students cannot stay on campus at all during an off-campus placeholder. Off-campus placeholders must be at the beginning or end of the day. Additional steps are required to participate in DE. (Eligibility information can be found on our school website: <https://lolhs.pasco.k12.fl.us/dual-enrollment/>)

Core Courses (See back page for list of core courses available.)	
English	Eng Hon 2
Math	Geo
Science	Bio
Social Studies	World Hist Hon.

Elective Courses (Note: Only the electives that fit after required core classes will be given on schedule, not all elective choices. Please list choices from 1-5 in order of preference. See back page for list of all elective courses available.)	
Elective Choice 1	Band
Elective Choice 2	Dig Design 1
Elective Choice 3	2-D Art 1
Elective Choice 4	eSchool on
Elective Choice 5	Spanish 1

QUESTIONS?