
LAND O' LAKES HIGH SCHOOL

**11TH GRADE
COURSE SELECTION**

CLASS OF 2027

GRADUATION REQUIREMENTS

24 CREDITS, INCLUDING:

- 4 Credits of English
- 4 Credits of Math
 - 1 must be Algebra 1
 - 1 must be Geometry
- 3 Credits of Science
 - 1 must be Biology
- 3.5 Credits of Social Studies
 - Personal Finance
 - World History
 - US History
 - US Government/Economics
- 1 Credit of a Fine Art
- 1 Credit of Physical Education
- 7.5 Credits of Electives

PASS THE ALGEBRA 1 BEST

Or earn a concordant score on the PSAT, SAT, ACT, CLT, or Geo EOC

PASS THE GRADE 10 ELA FAST

Or earn a concordant score on the SAT, ACT, CLT

2.0000 UNWEIGHTED GPA

GRADUATION REQUIREMENTS

- ✓ At this point, 10th graders should have at least 9 credits and a 2.0000 unweighted GPA to be considered on track for graduation.
- ✓ At the end of 10th grade, students should have at least 12 credits and a 2.0000 unweighted GPA to be considered on track for graduation.

WHAT CLASS IS RIGHT FOR ME?

REGULAR

- Focus on making students “life ready”
- Prepares students to pass state & district mandated tests

HONORS

- Prepares students for entry-level college coursework
- Academically challenging; faster paced, deeper dive into the content
- Student has strong work ethic, participates in class discussions, and advocates when struggling

AP/DE

- Prepares students for university-level coursework
- Offers intense writing & critical thinking exercises
- Nightly homework, reading & writing
- Potential to earn college credit

Still not sure? Talk to your current teachers!

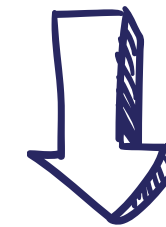
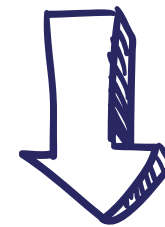
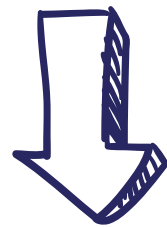
ENGLISH

10th Grade

ENG 2/ENG 2 HON

ENG 2 HON
(A/B + FAST 4/5)

AICE ENGLISH
GENERAL PAPER

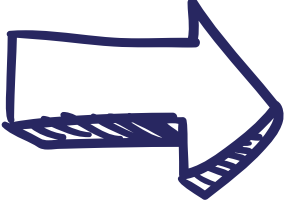


11th Grade

AICE ENGLISH
GENERAL PAPER

AP LANG OR
DE ENGLISH COMP

AP LANG OR
DE ENGLISH COMP

WRITE ON COURSE CARD  **ENTER IN MYSTUDENT**

AICE English Gen Paper	AICE GEN ENG PAPER (1009400Z)
AP Lang & Composition	AP ENG COMPO (1001420Z)
DE English Comp 1 & 2**	ENGLISH COMP 1 (ENC1101D) & ENGLISH COMP 2 (ENC1102D)

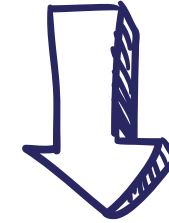
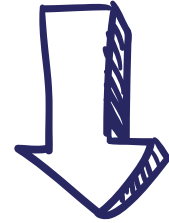
**** MUST SELECT A BACKUP OPTION FOR DE COURSES**

MATH

10th Grade

GEO/GEO HON
(C/D/F + EOC 1/2)

ALG 2/ALG 2 HON
(C/D/F)



11th Grade

- Math for College Liberal Arts: Includes some of this and some of that (Algebra, Geometry, Probability, Statistics, & Logic)
- Math for College Statistics: Analyzing and applying probability and data. Includes some Algebra skills.
- Math for College Algebra: Includes elements of Algebra 1 & 2. Good fit for students who want to review and expand Algebra skills.
- Math for Data & Financial Literacy: Real-world applications related to financial concepts (basic economic and accounting principles).

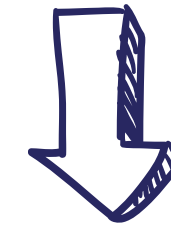
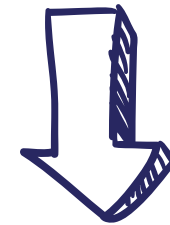
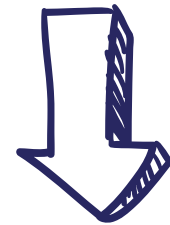
MATH

10th Grade

GEO/GEO HON
(A/B/C + EOC 3/4/5)

ALG 2/ALG 2 HON
(A/B/C)

ALG 2 HON
(A/B)



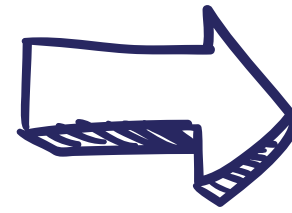
11th Grade

ALGEBRA 2
OR
ALGEBRA 2 HON

MATH FOR DATA &
FIN LIT HON
OR
PROB & STATS HON

AP PRE-CALC
AP STATS
DE COLL ALG/TRIG**

WRITE ON COURSE CARD



ENTER IN MYSTUDENT

Geometry	GEO (1206310Z)
Math for College Algebra	MATH COLL ALGEBRA (1200Z10Z)
Math for College Liberal Arts	MATH COLL LIB ARTS (1207350Z)
Math for Data & Financial Lit	MATH DATA & FIN LIT (1200384Z)
Math for Data & Fin Lit Hon	MATH DATA & FIN LIT H (1200388Z)
Math for College Statistics	MATH FOR COLL STATS (1210305Z)
Algebra 2	ALG 2 (1200330Z)
Algebra 2 Honors	ALG 2 HON (1200340Z)
Probability & Stats Honors	PROB STAT W/APPS HON (1210300Z)
AP Pre-Calculus	AP PRECALCULUS (1202305Z)
AP Calculus AB	AP CALCULUS AB (1202310Z)
AP Calculus BC	AP CALCULUS BC (1202320Z)
AP Statistics	AP STAT (1210320Z)
DE College Alg/Trig**	COLLEGE ALGEBRA (MAC1105D) & PLANE TRIGONOMETRY (MAC1114D)

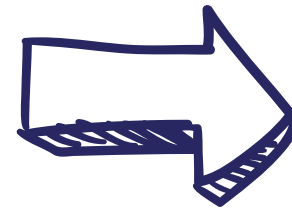
** MUST SELECT A BACKUP OPTION FOR DE COURSES

SCIENCE

- MARINE SCIENCE
- MARINE SCIENCE HONORS
- ENVIRONMENTAL SCIENCE
- FORENSIC SCIENCE
- CHEMISTRY HONORS
- PHYSICS HONORS
- ANATOMY & PHYSIOLOGY HONORS
- GENETICS HONORS
- AP BIOLOGY
- AP CHEMISTRY
- AP ENVIRONMENTAL SCIENCE
- AP PHYSICS 1
- DE INTRO TO BIO & HUMAN BIO**

Note: Chemistry is not required for high school graduation, but is recommended for students planning to go to a 4-year university.

WRITE ON COURSE CARD



ENTER IN MYSTUDENT

Marine Science	MARINE SCI 1 (2002500Z)
Marine Science Honors	MARINE SCI 1 HON (2002510Z)
Environmental Science	ENV SCI (2001340Z)
Forensic Science	FORC SCI 1 (2002480Z)
Chemistry Honors	CHEM 1 HON (2003350Z)
Physics Honors	PHYS 1 HON (2003390Z)
Anatomy & Physiology Honors	ANAT PHYSIO HON (2000360Z)
Genetics Honors	GENETICS HON (2000440Z)
AP Biology	AP BIO (2000340Z)
AP Chemistry	AP CHEM (2003370Z)
AP Environmental Science	AP ENV SCI (2001380Z)
AP Physics 1	AP PHYSICS 1 (2003421Z)
DE Intro Bio/Human Bio**	INTRO BIOLOGY (BSC1005D) & HUMAN BIOLOGY (BSC 1020D)

** MUST SELECT A BACKUP OPTION FOR DE COURSES

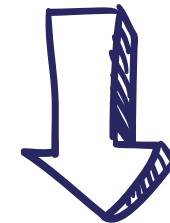
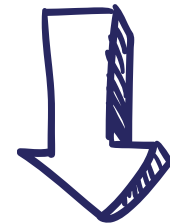
SOCIAL STUDIES

10th Grade

WORLD HISTORY

WORLD HIST HON

US HIST HON



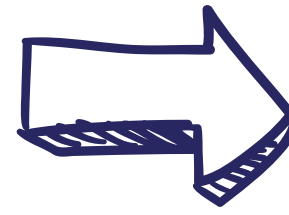
11th Grade

US HISTORY

US HIST HON,
AP US HIST, OR
DE AMER HIST

GOV HON/ECON HON
OR
AP GOV/AP ECON

WRITE ON COURSE CARD



ENTER IN MYSTUDENT

Personal Finance	PER FIN & MON MGMT (2102371Z)
Personal Finance Honors	PER FIN & MON MGMT H (2102373Z)
US History	US HIST (2100310Z)
US History Honors	US HIST HON (2100320Z)
AP US History	AP US HIST (2100330Z)
DE American History 1 & 2**	US HISTORY TO 1877 (AMH2010D) <u>&</u> US HISTORY FROM 1877 (AMH2020D)
US Govt/Economics	US GOVT (2106310Z) <u>&</u> ECONOMICS (2102310Z)
US Govt Hon/Econ Hon	US GOVT HON (2106320Z) <u>&</u> ECONOMICS HONORS (2102320Z)
AP US Govt/AP Econ	AP US GOVT/POL (2106420Z) <u>&</u> AP MACROECON (2102370Z)

** MUST SELECT A BACKUP OPTION FOR DE COURSES

PHYSICAL EDUCATION

Meeting the PE Requirement:

- 1 Credit of HOPE
- 0.5 Credit of Personal Fitness (Online) + 0.5 Credit of PE class such as Team Sports
- 0.5 Credit of Personal Fitness (Online) + 0.5 Credit of Outdoor Education (Online) or Fitness Lifestyle Design (Online)
- 0.5 Credit of Personal Fitness (Online) + Marching Band Waiver***
- Waiver from 2 seasons of a JV or Varsity sport at LOLHS***

***IMPORTANT: You do not earn credit for waivers, so you would need to complete extra elective credits. Waivers are not automatically entered. Follow up with counselor if you want a waiver entered.

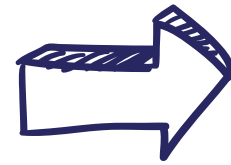
FINE/PRACTICAL ART

- Students should take a Fine or Practical Art course if they have not met this requirement yet.
- Any course on the course card that has a ~ symbol meets the Fine Art requirement.
- NOTE: Some courses require after school commitment (e.g., practice, recitals, performances).
- Prior experience is not required for Band, Dance, or Chorus.

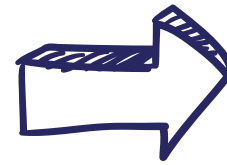


CULINARY ACADEMY

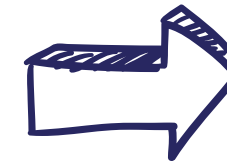
9th Grade
NUTRITION &
FOOD SCI



10th Grade
CULINARY 1



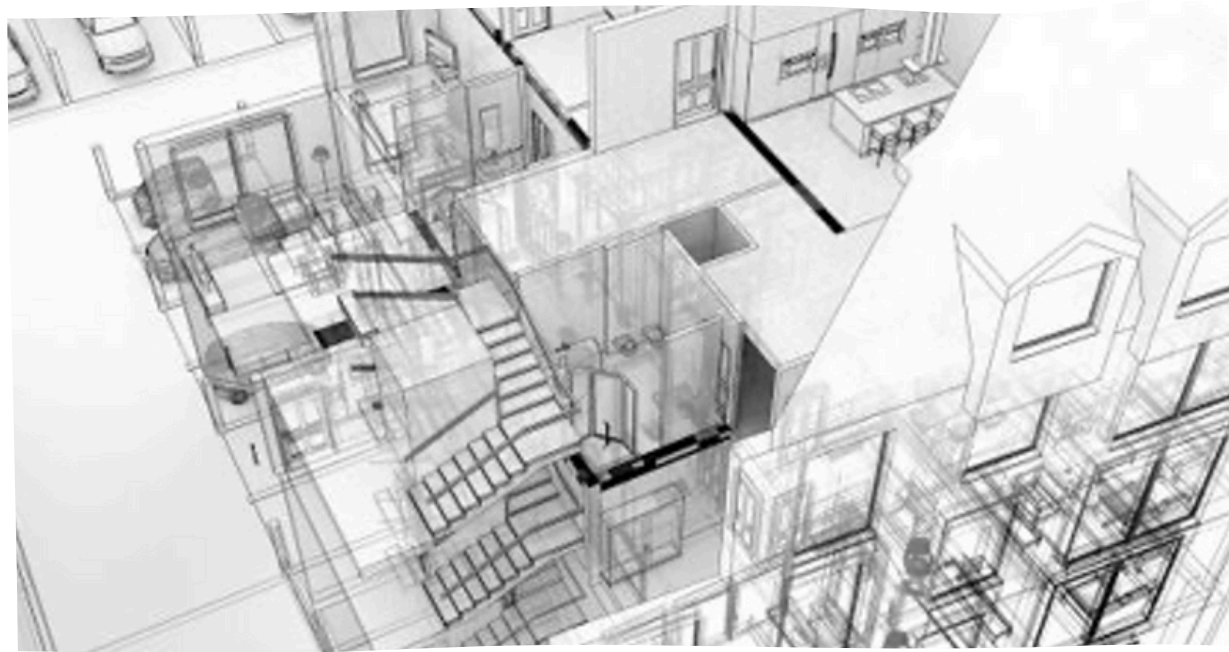
11th Grade
CULINARY 2



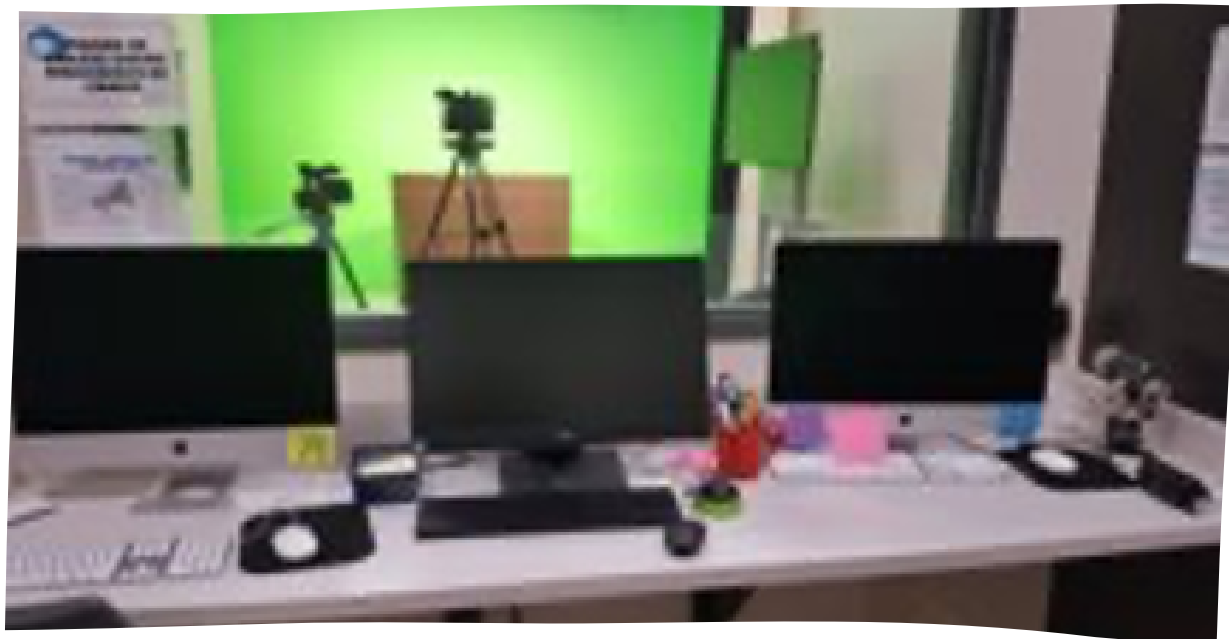
12th Grade
CULINARY 3 &
CULINARY 4

Students must be in the Culinary Academy
to take the Culinary classes.





ELECTIVES



- Two consecutive years of a foreign language (i.e., Spanish 1 and Spanish 2) are NOT required for high school graduation, but ARE required for the Bright Futures scholarship and admission to most 4-year universities.
- Some multi-year CTE pathways provide opportunities for students to get industry certifications:
 - Digital Info Tech - Microsoft Applications
 - Digital Design - Adobe Photoshop, Illustrator
 - Tech Design - AutoCAD
 - Early Childhood - Early Childhood Prof. Certificate
 - Business Entrep Prin

ELECTIVES

- **Peers as Partners in Learning vs. Leadership Skills Development**
 - Leadership Skills: assigned to staff, providing administrative support
 - Peers as Partners: assigned to a teacher's room, providing support to students
 - Application required!
- **OJT (On-The-Job Training)**
 - Opportunity to earn high school elective credit while working a job.
 - For each period of OJT, student must be working a minimum of 5 hours per week.
 - Must be ON TRACK for graduation to get a parking pass.
 - Students doing OJT have an eSchool off-campus placeholder on their schedule and signs up for OJT through eSchool.
 - Co-requisite: DCT Principles is the required co-curricular course with lessons and assignments about the work of work (employability skills, communication, etc.)
 - Students earn a grade/credit for each OJT period and DCT.

ON/OFF CAMPUS PLACEHOLDERS

- PHSC Placeholder = student plans to take a DE class online or through PHSC.
- eSchool Placeholder = student plans to take an online class.
 - Students can have up to 3 eSchool placeholders on their schedule.
 - It is the student's responsibility to sign up for/complete the class online. Students must complete the online course to earn credit for any placeholders on their schedule.

On/Off Campus Placeholders

(Must take class online or through PHSC to earn credit)

eSchool ON Campus

ESCHOOL ON CAMPUS (ZZESCMPZ)

eSchool OFF Campus (indicate period)

ESCHOOL OFF CAMPUS (ZZESOFF*)

PHSC OFF Campus** (indicate period)

PHSC OFF CAMPUS (ZZPHOFF*)

*For the off campus placeholders, the number at the end indicates which period you want to have off campus. (For example, ZZESOFF₁ means that I want to have eSchool Off Campus 1st period.)

eSchool Placeholder - Student **MUST** sign up for/take a class online through FLVS/Pasco eSchool.

PHSC Off Campus - Student **MUST** sign up for/take a Dual Enrollment class through PHSC or online.

OJT - Student **MUST** sign up for/take OJT and DCT online through Pasco eSchool

DE

vs.

AP

College credit is earned if student passes the class.

Grade earned goes on high school AND college transcript.

College course. Parents do not have access to grades until after they are finalized.

Student **MUST** meet eligibility requirements (i.e., test scores).

College credit is earned if student passes the AP exam.

Grade earned goes on high school transcript **ONLY**.

High school course. Grades are posted the same as other HS courses.

Course does not have specific eligibility requirements.

DUAL ENROLLMENT

DUAL ENROLLMENT INFO SESSION

Counselors will walk through the step-by-step process that is required for taking DE courses.

Sign up is NOT required to attend.

DATE - THURS, 3/27

TIME - 5:30-6:30 P.M.

LOCATION - LOLHS COMMONS

DUAL ENROLLMENT

PERT TESTING

In order to be eligible for DE, students must have a 3.0000 unweighted GPA and meet minimum test score requirements on either the PERT, SAT, ACT, or CLT. We will be offering the PERT for free at LOLHS after school for interested students.

SIGN UP IS REQUIRED. Use the QR Code below to sign up by Friday, February 21st.

DATE - TUES, 3/4(READING & WRITING)
WED, 3/6(MATH)

TIME - 1:45 P.M.

LOCATION - MEDIA CENTER



REMINDERS



Students must have 6 classes each semester, regardless of the number of high school credits previously earned. (If you select a semester course, you must select another semester course to go with it.)



Students **CANNOT** earn duplicate credit. (You can't take a course that you've already taken.)



Talk to your current teachers about course options for you.



Land O' Lakes High School
11th Grade Course Selection 2025-2026



Name: Jane Smith Student ID: 123456

Email Address: 123456@student.pasco.k12.fl.us

- Students must be enrolled in 6 classes each semester, regardless of the number of high school credits previously earned.
- We will do our best to honor students' first choices of electives. The remaining elective choices will be considered as alternates if the top elective choice does not fit in the schedule or is not available. If a student selects a course as an option on this sheet and is assigned to that class, we will not accommodate a schedule change request in the fall to remove them from it. The requested courses are dependent on grade level, availability, class size, and student qualifications (prerequisites).
- Students cannot pick their teachers, class periods, or lunch period. **Please choose courses carefully since it likely will not be possible to change the courses later.**
- If a student wants to take an online class, they can choose to take it in our on-campus eSchool lab or off-campus. If a student chooses to go off campus, the off-campus placeholder must be at the beginning or the end of the day **AND** the student must have daily transportation. Students cannot stay on campus at all during an off-campus placeholder. Depending on availability, students may not be able to have more than one period in the on-campus eSchool lab. **Students can have a maximum of 3 eSchool placeholders.**
- Students who are interested in doing a Dual Enrollment (DE) course MUST meet the eligibility requirements **before May 2025** to be able to take DE courses in the fall. Students taking a DE course online or through PHSC will have a "PHSC Off Campus Placeholder" on their schedule, and must have daily transportation. Students cannot stay on campus at all during an off-campus placeholder. Off-campus placeholders must be at the beginning or end of the day. Additional steps are required to participate in DE. (Eligibility information can be found on our school website: <https://lolhs.pasco.k12.fl.us/dual-enrollment/>)

Core Courses (See back page for list of core courses available.)	
English	AICE English Gen Paper
Math	Math for Data + Fin Lit
Science	Forensic Science
Social Studies	US Hist Hon

Elective Courses (Note: Only the electives that fit after required core classes will be given on schedule, not all elective choices. Please list choices from 1-5 in order of preference. See back page for list of all elective courses available.)	
Elective Choice 1	2-D Art 2
Elective Choice 2	eschool off campus 6 th pd
Elective Choice 3	3-D Art 1
Elective Choice 4	Digital Design 1
Elective Choice 5	Team Sports 1+2



Land O' Lakes High School
11th Grade Course Selection 2025-2026



Name: Jane Smith Student ID: 123456

Email Address: 123456@student.pasco.k12.fl.us

- Students must be enrolled in 6 classes each semester, regardless of the number of high school credits previously earned.
- We will do our best to honor students' first choices of electives. The remaining elective choices will be considered as alternates if the top elective choice does not fit in the schedule or is not available. If a student selects a course as an option on this sheet and is assigned to that class, we will not accommodate a schedule change request in the fall to remove them from it. The requested courses are dependent on grade level, availability, class size, and student qualifications (prerequisites).
- Students cannot pick their teachers, class periods, or lunch period. Please choose courses carefully since it likely will not be possible to change the courses later.
- If a student wants to take an online class, they can choose to take it in our on-campus eSchool lab or off-campus. If a student chooses to go off campus, the off-campus placeholder must be at the beginning or the end of the day **AND** the student must have daily transportation. Students cannot stay on campus at all during an off-campus placeholder. Depending on availability, students may not be able to have more than one period in the on-campus eSchool lab. Students can have a maximum of 3 eSchool placeholders.
- Students who are interested in doing a Dual Enrollment (DE) course MUST meet the eligibility requirements before May 2025 to be able to take DE courses in the fall. Students taking a DE course online or through PHSC will have a "PHSC Off Campus Placeholder" on their schedule, and must have daily transportation. Students cannot stay on campus at all during an off-campus placeholder. Off-campus placeholders must be at the beginning or end of the day. Additional steps are required to participate in DE. (Eligibility information can be found on our school website: <https://lolhs.pasco.k12.fl.us/dual-enrollment/>)

	Core Courses (See back page for list of core courses available.)
English	DE English Comp 1+2 (Backup: AP Lang)
Math	Algebra 2 Hon
Science	Chem 1 Hon
Social Studies	DE US Hist (Backup: US Hist Hon)

	Elective Courses (Note: Only the electives that fit after required core classes will be given on schedule, not all elective choices. Please list choices from 1-5 in order of preference. See back page for list of all elective courses available.)
Elective Choice 1	Band 5 Hon
Elective Choice 2	French 3 Hon
Elective Choice 3	Law studies / court Procedures
Elective Choice 4	Lit in Media Honors
Elective Choice 5	Accounting Applications